



# TRENCHLESS REHABILITATION SOLUTIONS

FOR WATERMANS AND WATER TREATMENT INFRASTRUCTURE

Vortex Water provides proven, safe, and cost-effective solutions for water infrastructure renewal. With a complete system of compliant materials and technologies, Vortex Water is the clear choice when you're facing costly leakage and aging water infrastructure.

#### VORTEX WATER REHAB SOLUTIONS

- All-American produced turn-key watermain rehabilitation solution from start to finish
- UNITEDBLUE™ Cured-in-Place Pipe (CIPP) liner
- EBAA Iron MegaLug® Joint Restraints
- Schwalm Robotic system for plugging and reinstatement of services
- Structure Guard® - Water 100% solids epoxy for water treatment plant structure rehabilitation
- GeoKrete®-Water Geopolymer mortar for full structural renewal and corrosion protection

## Turn-Key Watermain Rehabilitation System

Designed with Industry leading products by manufacturers with a long legacy of success.

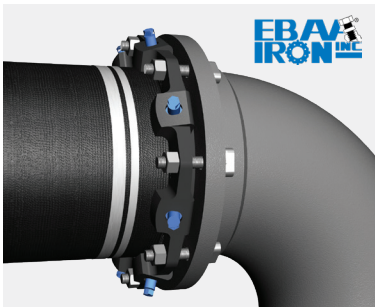
ALL-AMERICAN CONNECTION



#### UNITEDBLUE™ (Formerly CIPP H2O)

Our American made water-safe, NSF 61- and BNQ-certified CIPP liner eliminates the need for total replacement.

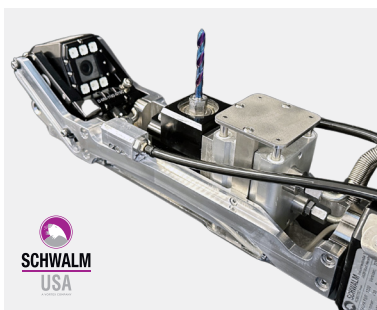
- **Third-party testing validates a 100-year design life**
- 6" to 48", up to 200 psi
- Multi-layer polyester felt/fiberglass hybrid lining system
- Proven, low-disruption installation process using limited access pits
- Resulting pipe performs in pressure systems as a stand-alone AWWA Class IV pipe
- Over one million feet of watermain relined



#### EBAA IRON MEGALUG® JOINT RESTRAINTS

100% American made MEGALUG Mechanical Joint Restraints are the go-to for reconnecting rehabilitated watermain. They effectively and economically restrain Ductile Iron Pipe (DIP) to mechanical joints above or below ground, for practically any application including valves, hydrants, and pipe. For use on all classes of ductile iron pipe.

- 1100 series - 3" to 60" | 2000PV - 3" to 36"
- Meets: AWWA C600 or ASTM D2774



#### SCHWALM TALPA WRC 1320 - WATER REHAB CUTTER

Designed in America, in partnership with Schwalm Robotic, the new Rehab Water Cutter\* from Schwalm redefines service reinstatement of watermain. It gets the job done, quickly and precisely.

- For watermain 5.5"- 8" (DN130-200)
- User-friendly joystick operation
- Air-driven motor, 12,500 rpm at 96 psi
- Integrated focus camera for enhanced pipe visibility and accuracy

\* Patent-pending technology

# Structure and Tank Restoration and Protection



## GEOKRETE®-WATER

Developed by Quadex®, a Vortex Company, GeoKrete-Water is an NSF 61-certified, micro-fiber reinforced geopolymer rehabilitates existing infrastructure, restoring structural integrity and renewing service life.

- Easy spin or spray cast application on all types of horizontal or vertical surfaces
- Ideal for large diameter pipes, culverts, tunnels, wet-wells in treatment plant structures



## STRUCTURE GUARD® - WATER

Developed by Quadex®, a Vortex Company, Structure Guard - Water 100% solids epoxy coats long pipelines and large tanks with a smooth finish, shielding against corrosion and abrasion.

- 100% solids, no VOCs, no PFAs, and NSF 61 and 61.5 Certified for pipe 4" and greater, structures, and tanks 50 gallons and larger
- Ideal for:
  - Concrete and steel potable water tanks
  - Potable water pipe (perfect for long pipes)
  - Raw water pipe and tanks
  - Fiberglass potable water tanks



## Vortex Water in Action

### MONTREAL CPP WATER MAIN RELINING

**Problem:** A 30-inch, pre-stressed Concrete Pressure Pipe water main was nearing the end of its service life. The line's location beneath a railway and its proximity to the St. Lawrence River created unique load design requirements and eliminated open-cut replacement as a viable rehab option.

**Solution:** A UNITEDBLUE™ fully structural pressure pipe CIPP liner was installed. The project required only a small amount of excavation, preserving the existing infrastructure and reducing environmental impact. The new liner, with a 100-yr design life, significantly extended the pipe's service life.



## I Highly Experienced Installation Team

### TOTAL COMMITMENT TO QUALITY

The rehabilitation of Potable watermains requires experience and attention to detail. The Vortex Water installation team has developed a comprehensive QA/QC process to ensure each project is a success. From the initial design and installation proposal through re-commissioning of the watermain, we focus on the details.



### STRICTLY DEDICATED TO WATERMAIN RENEWAL

Backed by years of proven experience in the field, and over a million feet of pipe relined, the Vortex Water installation division ensures predictable, successful outcomes for even the most complex water infrastructure projects.

### AGGRESSIVE PRODUCT DEVELOPMENT

Our dedicated R&D team has spear-headed the design and development of patent-pending technology that is driving installation quality that has become the benchmark for the industry.

- Water Rehab Cutter
- Service Sealing & Reinstatement

[WWW.VORTEXCOMPANIES.COM](http://WWW.VORTEXCOMPANIES.COM)

[SALES@VORTEXCOMPANIES.COM](mailto:SALES@VORTEXCOMPANIES.COM)

1-855-WHYDIG1

16945 NORTHCHASE DRIVE

SUITE 2200

HOUSTON, TX 77060

