

**CASE
STUDY**



**PROJECT
SNAPSHOT**

PROJECT OWNER
South Shore Condominiums

CONTRACTOR
Vortex Services - Northwest Division

PROBLEM
The condominium facility's overhead cast iron sewer lines and the sewer mains located underneath the facility's parking structure required repairs.

SOLUTION
The team brush-coated 150 LF of the 4" cast iron piping through five access points. Next, they dug an access pit at the southeast corner of the parking structure. They then installed 102 LF of 4" CIPP in the sewer main and re-piped the area with a cleanout for future access. Next, they installed another 56 LF of 4" x 6" CIPP in the main. After UV-curing each CIPP liner, they performed lateral reinstatements with the Picote Maxi Miller.

CONTACT
Clayton Northington
Vortex Services
cnorthington@vortexcompanies.com

Sewer Lining and Coating in Des Moines, WA

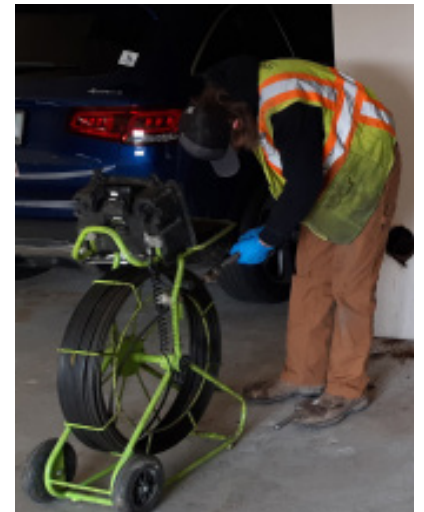
CONDOMINIUM COMMUNITY IN SEARCH OF REHABILITATION SOLUTIONS FOR PUBLIC AND PRIVATE SEWER LINES

VORTEX EQUIPMENT USED

1 Picote Maxi Miller

THE CHALLENGE

The South Shore Condominium community is located on the Puget Sound just south of Seattle in Des Moines, Washington. In early 2023, the South Shore community noticed that the flooring in the facility's parking structure was settling unevenly. The owner put out a bid for a rehabilitation job that would include repairing the facility's overhead cast iron sewer lines and the aging concrete sewer main located underneath the parking structure. Vortex Services was selected for this project because of the team's years of experience and unintrusive proposed rehabilitation methods.



THE SOLUTION

The Vortex Services crew got to work in April 2023. The team began by brush-coating 150 LF of the 4" cast iron piping through five access points. Next, the squad dug an access pit at the southeast corner of the parking structure. They then installed 102 LF of 4" cured-in-place pipe (CIPP) in the sewer main from the inside of the structure to the access pit and re-piped the area with a cleanout for future access. Next, the squad used the access pit to install another 56 LF of 4" x 6" of CIPP from the new cleanout to the city's right of way. After sufficiently UV-curing each CIPP liner, the crew performed lateral reinstatements using the Picote Maxi Miller machine. Once the damaged sections of the sewer lines were fully restored, the team brought this three-week rehabilitation project to an end.



CASE STUDY



THE RESULTS

Despite the necessary excavation and awkward overhead access for the cast iron lines, the Vortex Services squad finished this job on time and within budget. The South Shore Condominiums' owner has been satisfied with the project results and is pleased with the crew's chosen trenchless repair methods.



IMPACT

1 Rehabilitated the overhead cast iron sewer lines without resorting to traditional open cut pipe replacement

2 using only one single excavation

3 Performed daily work between 8:30 AM - 4:30 PM, ensuring that all residents had water access after the typical workday