

MAXLINER®



MAX DRUM 600

MOBILE INVERSION DRUM FOR SMALL DIAMETER PIPE AND
LATERAL REHABILITATION | HOLDS UP TO 147 FT. OF 4" LINER



Field-Proven and Robust Inversion Equipment for Uncomplicated Pipe Rehabilitation

The family of Max Inversion Drums allow you to **easily, safely and quickly insert flexible liners into the sewer that needs to be rehabilitated**. The resin-impregnated liner is wound onto the drum axle with a control rope and inverted into the open-ended or closed-ended sewer by compressed air. The inversion pressure and the inversion speed are constantly controlled via the control elements on the inversion drum.

After the impregnated liner has been inverted, the curing process of the liner can be accelerated with hot water, steam or UV/LED light. This results in the creation of a new pipe in the old pipe.

Overview

**167 LBS.
(76KG)**

WEIGHT

Ready to use and perfect for lateral connection rehabilitation

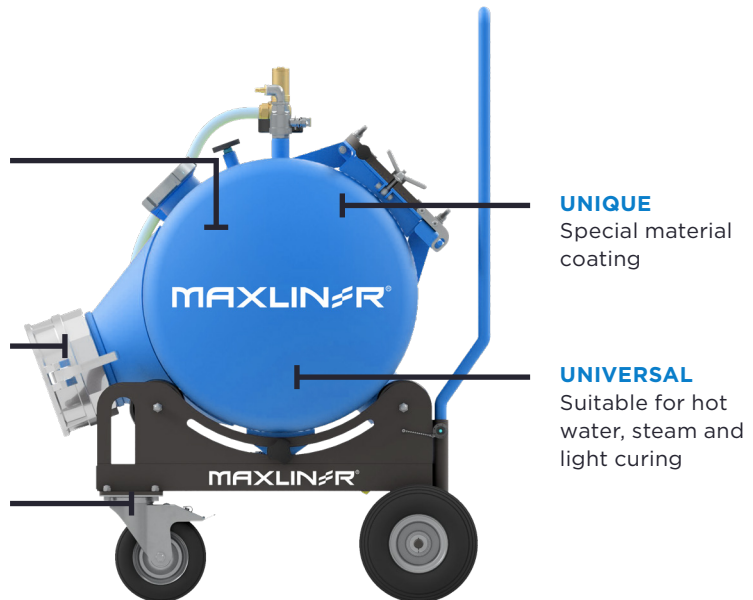
CAM LOCK

Coupling for simple exchange of cones in no time at all

100%

MOBILITY

Movable and flexible through weight optimization and rollers



Features and Details



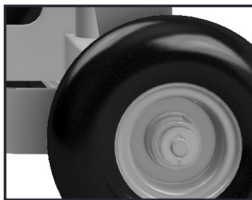
- 1 REMOVABLE TRANSPORT HANDLE
- 2 PRESSURE GAUGE
- 3 THERMOMETER
- 4 COMPRESSED AIR BALL VALVE
- 5 PRESSURE RELIEF VALVE
- 6 PROTECTIVE COATING
- 7 TILT ADJUSTMENT
- 8 DRAIN DEVICE
- 9 SIGHT GLASS FOR VISUAL CONTROL
- 10 WATER CONNECTION
- 11 CAM LOCK
- 12 REMOVABLE HAND WHEEL

MODEL	DRUM-Ø	DIMENSIONS (W x L x H)	CONTROL WINDOW	CONNECTION	MAX. PRESSURE	CURING METHOD	MAX. TEMP.	WEIGHT	SAFETY VALVE	MAX. LINER LENGTH
Max Drum 600	23" 600 mm	800 x 1016 x 1300 mm	8" x 18"	Cam lock	22 psi 1.5 bar	Air, steam, hot water, light	212°F (100°C)	167 lb 76kg	22 psi 1.5 bar	DN100/4mm = 45m / 147 ft DN125/4mm = 40m / 131 ft DN150/4mm = 35m / 115 ft DN200/4mm = 30m / 98 ft DN300/4mm = 25m / 82 ft

Detail Views



Premium Fittings



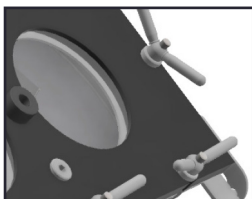
Stable Wheels



Transport Handle



Swivel Wheels



Glass Window

Inversion Drum for Liner From 4" to 12" | DN100 to DN300

Extremely mobile, the Max Drum 600 inversion unit features stable frame construction, with top loading for inserting the liner into the main sewer and laterals up to 12" | DN300.

- Optimized tilting system by means of tool-free locking device
- Drum body with glass window
- Aluminum construction, glass bead blasted and coated
- Transport rollers for easy positioning
- Cam lock system on the cone
- Removable, large and ergonomic hand wheel
- Suitable for curing with hot water, steam and UV



MAXLINER®



(877) 426-5948

901 HOLLIE DRIVE

MARTINSVILLE, VA 24112

SALES@MAXLINERUSA.COM

WWW.MAXLINERUSA.COM