



# spinMASTER™ II

## Manhole Epoxy Applicator

### THE CUTTING EDGE IN MANHOLE LINING APPLICATION TECHNOLOGY.

Put an end to uneven coating applications and long, backbreaking hours spent finishing up the job with this innovative, easy-to-use device. Designed with direct input from field-experienced applicators like you, we have developed a centrifugal-cast product that offers unprecedented precision and accuracy. Our patent-pending variable trajectory casting head speeds up the entire process and helps you get your job done quickly, efficiently, and correctly. With the spinMASTER™ II you can be assured of consistently even coating applications, so you can spend less time perfecting details and more time getting the job done right.

### FEATURES AND BENEFITS

- Variable trajectory caster for a wider material spread
- Includes air regulator with protective case
- 1 HP - 25,000 rpm pneumatic air motor
- ¼ NPT air hose connection
- Air consumption: 32 cfm
- Max air pressure: 90 psi





# COATING EQUIPMENT SOLUTION

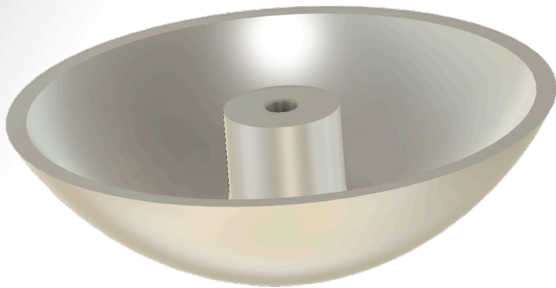
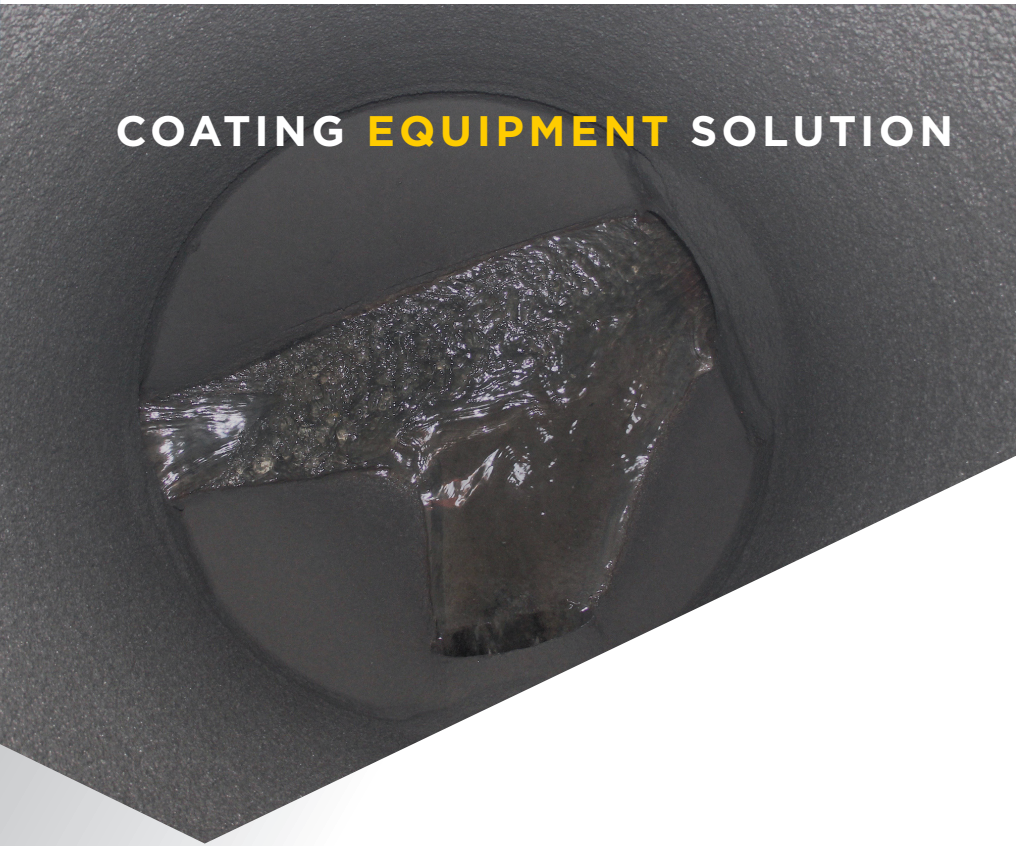
### EPOXY COATING APPLICATOR

The spinMASTER™ II is a centrifugal-cast manhole lining applicator which utilizes a patent-pending variable trajectory casting head that will not only simplify and speed-up the application process, it will produce a consistently even coating application as well.

### THE VARIABLE PITCH DIFFERENCE

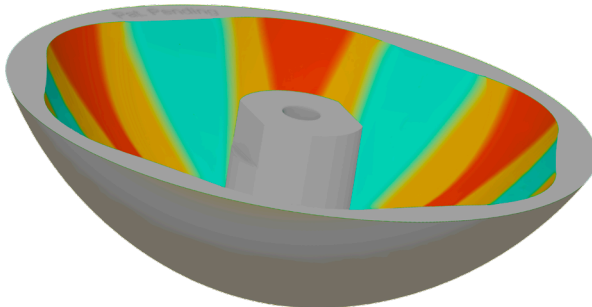
The patent-pending spinMASTER™ II utilizes a unique variable pitch technology within the casting dish to create multiple trajectories for the material to flow, thereby increasing the material coverage.

This increased coverage not only speeds up the application time, but also produces a more even overlap and distribution to create a uniform coating. Don't waste another day on tedious and time-consuming detail work; pick up a spinMASTER™ II Manhole Epoxy Applicator today and experience the difference!



Single Pitch  
Narrow Coverage

VS.



Variable Pitch  
Extended Coverage