

# PARSON PRODUCTS MASTER CATALOG

YOUR GUIDE TO REHABILITATION PRODUCTS,  
CONSTRUCTION MATERIALS & EQUIPMENT

For additional product information and pricing,  
contact your regional TSM, BDM OR call  
1-855-WHYDIG1.

# TABLE OF CONTENTS

## MANHOLE INSERTS

• Parson Manhole Insert	2
• Parson Manhole Insert-V2P	2
• Parson Valve Box	2
• Parson Stainless Steel Manhole Insert	3
• Parson Odoreater Manhole Insert	3
• Parson Odoreater CC Manhole Insert	3

## LEAK STOP PRODUCTS

• Parson Quick Plug	4
• Parson Hydro Grout	4
• Parson Perma Seal	4
• Parson Seal-Tite	5
• Grout Accessories	5

## PATCHING MATERIALS

• Parson RPM	6
• Parsonpoxy FS1+	6

## FLEXIBLE CHIMNEY SEAL

• Parsonpoxy FP+	6
------------------	---

## LININGS AND COATINGS

• Parson MH Liner	7
• Parson CA Liner 100	7
• GeoLiner® Geopolymer Mortar	8
• Parsonpoxy SEL-80	8

## MANHOLE REPAIR ACCESSORIES

• Paving Risers	9
• Manhole Cover Cushion	9
• Manhole Steps	10

## MANHOLE REHABILITATION EQUIPMENT

• CG575 Trailer Mounted Mortar Rig	11
• King XL70 Epoxy Sprayer	11
• Ultra 495 XT	12
• spinMASTER™ II	12
• SPN-1000 Mortar Spincaster	12



**INSTALL  
EASILY**

**MAINTENANCE  
FREE**

# Parson Environmental Products

Parson offers over 25 manhole insert designs that **meet the majority of manhole shapes, sizes and depths.**

The Parson product offering now includes a full line of cementitious linings, epoxy coatings, foam grouts, application equipment and training.

## APPLICATIONS

- I & I prevention
- Manhole rehab
- Manhole repair

## PRODUCT LINE OVERVIEW

- Manhole Inserts
- Odor Control Inserts
- Manhole Repair Materials
- GeoLiner® Geopolymer
- Manhole Rehabilitation Accessories
- Manhole Rehab Equipment





### Parson Manhole Insert

Parson Manhole Inserts are manufactured from high density, high molecular weight polyethylene and are proven effective to reduce and prevent excessive surface water inflow entering the collection system, through the manhole lid. Inflow caused by heavy rainfall is significantly reduced, lowering plant operating and treatment costs. Parson Manhole Inserts are a practical solution to expensive plant expansions, and high sewage treatment costs.

#### ADVANTAGES

- **No-valve method of ventilation available**
- **Single or double valve ventilation system available**
- **No corrosive parts**
- **No maintenance required**
- **Keeps grit, sand, salt, chemical spills, foreign objects, road oils, etc. from entering collection systems**
- **Cost-effective alternative to replacing existing manhole covers with “water-tight” covers**



### Parson Manhole Insert – V2P

The Parson Manhole Insert-V2P is manufactured from high density, high molecular weight polyethylene and is proven effective to reduce or prevent surface water inflow to the collection system, through the manhole lid. Parson Manhole Inserts-V2P are a practical solution to expensive plant expansions, new construction moratoriums or high sewage treatment costs.

#### ADVANTAGES

- **Closed-cell, cross-linked polyethylene gasket provides a leak-proof seal**
- **Spring loaded Vacuum Release Valve is designed to activate at approximately 2.0 PSI**
- **Spring loaded Gas Release Valve is designed to activate at approximately 1.0 PSI**



### Parson Valve Box

Parson Valve Box Inserts are made of high density polyethylene and are proven to prevent dirt, debris, road oils, salts and chemicals from collecting in the bottom of a water valve box. The insert eliminates the need to dig at the bottom of the valve box to clear the valve for operation.

#### ADVANTAGES

- **No corrosive parts**
- **Keeps grit, sand, foreign objects and water from entering the valve box**



### Parson Stainless Steel Manhole Insert

The Parson Stainless Steel Manhole Insert is manufactured from 18 gauge 304 stainless steel and has been proven effective in reducing or preventing surface water inflow to the collection system, through the manhole lid. Parson Stainless Steel Manhole Inserts are a practical solution to expensive plant expansions, new construction moratoriums or high sewage treatment costs.

#### GASKET

The gasket is manufactured from closed-cell neoprene material and is attached by a pressure sensitive adhesive, to the weight-bearing surface of the dish.

#### ADVANTAGES

- **Dramatically reduces sewage treatment costs**
- **No maintenance required**
- **Extremely durable**
- **Keeps grit, sand, salt, chemical spills, foreign objects, road oils, etc. from entering the Collection System**



### Parson Odoreater Manhole Insert

Parson Odoreater is a specially designed manhole insert, with the addition of a canister containing 20 lbs. of activated carbon, that traps and stores unpleasant hydrogen sulfide and methyl mercaptan odors. Purified air is then allowed to ventilate into the atmosphere through the canister lid. A one-way valve allows water to drain, but no air to pass through it.

#### ADVANTAGES

- **Compact and corrosion resistant**
- **Does not require routine maintenance and carbon can be replaced without removing the entire unit from the manhole**
- **Won't interfere with installation or removal of the manhole cover**
- **Twenty-pound bags of replacement carbon are available**
- **Custom-sized for perfect fit. Ask for our sizing/measurement guidelines.**



### Parson Odoreater CC Manhole Insert

Parson Odoreater CC is a specially designed Manhole Insert, with the addition of a canister containing 20 lbs. of non-impregnated, catalytic activated carbon, that traps and stores unpleasant hydrogen sulfide and methyl mercaptan odors. Unlike typical activated carbons, catalytic carbon can be water washed to restore some of its H<sub>2</sub>S capacity and extend the useful life.

#### ADVANTAGES

- **Catalytic carbon can be water washed to extend its life and effectiveness**
- **Compact and corrosion resistant**
- **Does not require routine maintenance and carbon can be replaced without removing the entire unit from the manhole**
- **Won't interfere with installation or removal of the manhole cover.**



### Parson Quick Plug

Parson Quick Plug is a hydraulic cement material that is mixed with clean, potable water to produce an extremely rapid setting plug. It is inserted into prepared areas to stop active leaks under low to moderate pressure. Parson Quick Plug may also be used for repairing cracks in concrete. It is ideal for sealing around pipes and conduits. It is non-corrosive and produces extremely high strengths.

#### ADVANTAGES

- **Simple to use — just add clean, potable water**
- **Stops leaks in approximately 1 minute**
- **Fills holes and cracks in floors and walls**
- **Excellent freeze-thaw resistance**
- **Nonmetallic**
- **High early strengths**

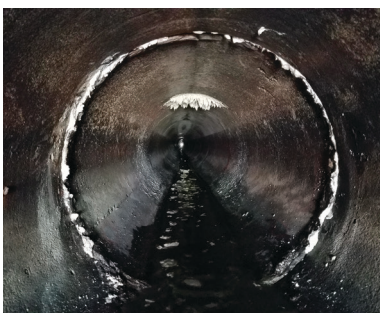


### Parson Hydro Grout

Hydro Grout is a low viscosity, polyurethane injection resin, designed to stabilize soil. When mixed with catalyst and injected, it migrates through loose soil and into below-grade voids. As it comes into contact with moisture in the soil, Hydro Grout reacts and expands to form a rigid foam. The foam encapsulates loose soil, fills voids, and forms a solid, water-tight barrier.

#### ADVANTAGES

- **Contains no solvents**
- **Very low viscosity for good penetration**
- **Cure time controlled by catalyst ratio**
- **Encapsulates and strengthens loose soil**
- **Forms a water-tight barrier to stop water migration**
- **Good resistance to chemicals**
- **Contains no TDI**
- **1200 psi compressive strength (ASTM D1621) in sand**



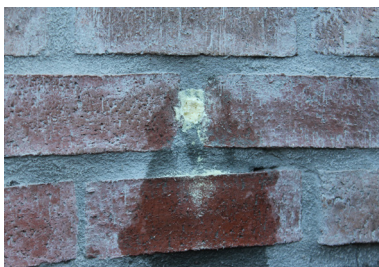
### Parson Perma Seal

Perma Seal is a single component, pre-catalyzed hydrophobic polyurethane grout that is extremely versatile and used for a variety of infrastructure rehabilitation applications. Its effectiveness and flexibility, making it an ideal solution for leak stoppage and crack sealing. This elastomeric polyurethane grout serves as a infiltration stop and is a viable method of sealing moving and non-moving cracks in concrete structures, slabs, vaults, tanks, and pipes.

#### ADVANTAGES

- **100% solids formulation**
- **400% – 600% expansion is typical**
- **Contains non-corrosive properties and no solvents**
- **Outstanding flexural and adhesive properties**
- **Exceptional absorption properties, up to 12x its volume in water**
- **Can be applied under water**





## Parson Seal-Tite

Parson Seal-Tite is a moisture insensitive, two-component, fast-reacting hydrophobic polyurethane grout designed to stop high volume active leaks in manholes, pump stations and other wastewater structures. Parson Seal-Tite is packaged in a dual cartridge with a static mixer and is injected at or near the source of the leak, using a manual dual component caulk gun. The product contains no solvents, CFCs or HFCs.

### ADVANTAGES

- Cures to a dense, rigid mass in approximately 30 seconds
- Chemically resistant
- Can fill large holes and voids
- Stops leaks up to 50 gpm
- Will not shrink
- Non hazardous — 100% solids
- Environmentally friendly
- Excellent bond strength
- Will expand to 10 - 12 times liquid volume



## Grout Accessories

### DRY OAKUM

Oakum is sold and shipped in 50-lb. coils in cardboard containers. Makes bullets when fully unwound, a 50-lb. coil will yield approximately 100 l.f. of  $\frac{3}{4}$ " diameter rope. The very loose weave allows rapid absorption of Parson Perma Seal in addition to ease of separation for insertion in small crevices.

To keep your project moving, always keep plenty of injection ports on hand.

### INJECTION PORTS

- A simple and reliable method of injection
- Specifically designed to accommodate jobsite conditions
- Capable of handling polyurethane and epoxy grouts
- Uses common hydraulic lubrication fittings
- Packaged with 100 ports and 100 zerk fittings per bag



## PATCHING MATERIALS



### Parson RPM

Parson RPM is a rapid setting, fiber reinforced, Calcium Aluminate cement patching material that is sulfate resistant and may be used to repair manhole inverts, voids or cracks.

#### ADVANTAGES

- **Simple to use** — just add clean, potable water
- **Non-shrink**
- **Excellent freeze-thaw resistance**
- **High early strength**
- **Full set in approximately 30 minutes**
- **High elongation**
- **Excellent flexibility**
- **Easy to use**



### Parsonpoxy FS1+

Parsonpoxy FS1 is a 100% solids epoxy coating with a 45-minute set-up time to allow you to bring your manholes back into service faster.

#### ADVANTAGES

- **Non-toxic** — 100% solids
- **Chemically resistant**
- **No primer required**
- **Easy application**
- **Return manholes to service quickly**

## FLEXIBLE CHIMNEY SEAL



### Parsonpoxy FP+

Parsonpoxy FP+ is a two-component, flexible, high-strength, corrosion-resistant epoxy/urethane hybrid product used for repairing sanitary sewer manhole chimney sections and joints, either interior or exterior.

#### ADVANTAGES

- **Dries durable, flexible and waterproof**
- **Non-toxic** — 100% solids
- **Chemically resistant**
- **No primer required**
- **Pre measured kit** — no guesswork
- **Easy application**
- **Elongation of 600%**





### Parson MH Liner

Parson MH Liner is a high-strength, fiber-reinforced, Portland Cement based, microsilica-enhanced mortar for use in rehabilitating manholes, lift stations, wet wells and other wastewater structures.

#### ADVANTAGES

- **Cost-effective alternative to replacement**
- **Stops infiltration and exfiltration**
- **Restores structural integrity**
- **Provides low to moderate corrosion protection**
- **High strength and low permeability**
- **Excellent bond to damp surfaces**
- **Apply up to 3" in a single coat**
- **Spincast, spray gun or trowel application**



### Parson CA Liner 100

Parson CA Liner 100 is a high strength, fiber-reinforced, microsilica-enhanced 100% Calcium Aluminate Cement with select, graded aggregates for use in rehabilitating manholes, lift stations, wet wells, and other wastewater related structures.

#### ADVANTAGES

- **Cost-effective alternative to replacement**
- **Stops infiltration and exfiltration**
- **Restores structural integrity**
- **Provides moderate to high corrosion protection**
- **High strengths and low permeability**
- **Excellent bond to damp surfaces**
- **Apply up to 2" in a single coat**
- **Spincast, spray gun or trowel application**



### GeoLiner® Geopolymer Mortar

GeoLiner® Geopolymer Mortar is a fiber reinforced product designed to provide excellent corrosion resistance along with higher strengths and lower permeability than typical cementitious linings. This high performance product can be used for rehabilitation of manholes, wet wells, catch basins, large diameter pipes and tunnels, storm water culverts and WWTP containment structures. Formulated with over 70% pozzolanic content, GeoLiner can be considered a true Geopolymer.

#### ADVANTAGES

- **Great adhesion and cohesion**
- **Utilizes natural and recycled materials**
- **Very low carbon footprint**
- **Provides high level of corrosion resistance**
- **Restores structural integrity**
- **Excellent bond to damp surfaces**
- **Spincast or spray gun application**



### Parsonpoxy SEL-80

Parsonpoxy SEL-80 is a 100% solids, two component high-build epoxy coating designed to be applied over brick, concrete or metal structures. It provides excellent protection and abrasion resistance for concrete and steel sewage structures such as manholes, wet wells, digesters and clarifiers, along with mixer blades, shafts and other steel machinery components in contact with aggressive liquids.

#### ADVANTAGES

- **Contains no flammable solvents or VOCs**
- **Apply to horizontal or vertical surfaces**
- **Effective on interior and exterior surfaces**
- **Apply to new and existing concrete and metal surfaces**
- **Excellent chemical resistance**



## MANHOLE REPAIR ACCESSORIES



### Paving Risers

For Manholes, Catch Basins and Valve Boxes

#### MANHOLES: STEEL

- Manufactured from Domestic (A-36) Steel
- Solid, Adjustable or Tapered styles available
- All welding performed by AWS DI-5 certified welders
- Factory applied Protective Coating
- Custom-made to customer specifications
- Weigh less than 50 lbs.
- PENNDOT Approved

#### MANHOLES: PLASTIC

- Injection molded using polypropylene/fiberglass mixture
- Corrosion and water resistant
- Crack resistant
- Over 50 sizes available
- Diameter can be adjusted slightly in the field
- Weigh less than 10 lbs.

#### STEEL CATCH BASINS

- Manufactured from Domestic A-36 Steel
- 3 or 4 sided styles available
- All welding performed by AWS DI-5 certified welders
- Factory applied Protective Coating
- Custom-made to customer specifications
- Weigh less than 50 lbs.
- PENNDOT Approved

#### VALVE BOXES

- Manufactured in USA from Class 35 B gray iron
- Variety of sizes available



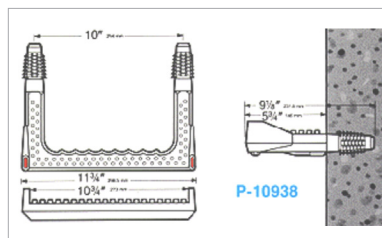
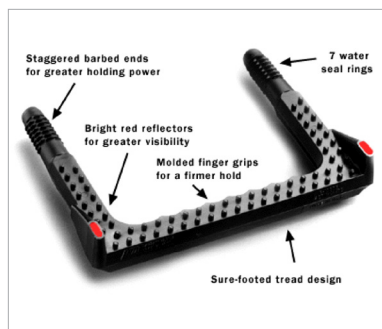
### Manhole Cover Cushion

#### QUICKLY AND EASILY SILENCE NOISY MANHOLE COVERS.

This product is a soft, pliable, round cord, which is impregnated with asphalt and is approximately 1/2" in diameter. It will silence noisy manhole covers and reduce cover and seat wear. Cut the 96" length as needed and leave an overlap at the splice joint.



## MANHOLE REPAIR ACCESSORIES



### Manhole Steps

#### THE SAFEST AND STRONGEST MANHOLE STEPS ON THE MARKET

#### QUICK AND EASY DRIVE-IN INSTALLATION

The innovative Polypropylene Manhole Steps are the first to be offered with molded hand grips and bright red reflectors, making it the safest, most innovative product of its kind. Made from tough, weather resistant copolymer polypropylene, these steps also offer sure-footed tread design, staggered barbed ends for greater holding power and seven waterseal rings.

Copolymer Polypropylene is known for its high-impact strength and superior resistance to the corrosive environment found in sewers. The steps are offered in 10" and 13" on-center widths.

## MANHOLE REHABILITATION EQUIPMENT

### CG575

#### Trailer Mounted Mortar Rig

Simple, powerful and built to last, the CG575 is ideal for mixing, pumping and spraying a wide range of materials, such as geopolymer, hybrid cements, repair mortars, and finish coats.

The CG575 is engineered and built to continuously mix and pump the widest range of mortar and grouting materials, from thin to thick consistencies. Materials often used with this system include Geopolymers, Hybrid Cements, Repair Mortars, Gel Mortars, Stucco, Fireproofing Plastering, EIFS, cement/masonry sand, cement/fly ash, flowable and non-flowable grouts, and Bentonite waterproofing grouts.

#### MIXING TANK

A 45 gallon (170 liter) mixing tank, large holding hopper and centrally located controls, ensure non-stop production with a single operator. The mixing tank contains no baffles, but instead is equipped with variable speed, high-efficiency paddles with wiper blades that prevent material build-up and provide rapid mixing.

The tank outlet valves are large slide gates that allow the thickest materials to fall easily into the pump hopper. The holding hopper has an auger in it to keep the material thoroughly mixed while constantly supplying the grout pump with material for the continuous pumping operation.

#### APPLICATIONS

- Manhole rehabilitation
- Slabjacking
- Void filling
- Tie backs
- Underlayments
- Bonded overlay



### King XL70 Epoxy Sprayer

The King XL70 pneumatic airless sprayer is a powerful machine for protective coatings. Designed to withstand the harshest environmental conditions and easily handle the toughest protective coatings and corrosion control applications.

This unit is designed to withstand the harshest environmental conditions and easily handle the toughest protective coatings and corrosion control applications.

- **Powerful air motor lets you use multiple guns with almost no perceivable pulsation.**
- **The higher output per cycle means less wear and tear of the parts and components.**
- **The King sprayer is designed to eliminate non-restartable icing stalls for more uptime.**
- **The heavy-duty cart provides protection for the pump and accessories.**

## MANHOLE REHABILITATION EQUIPMENT



### Ultra 495 XT

The Ultra 495 XT delivers an airless spray experience like no other. Featuring a 1.7 HP Xtreme Torque motor, Next Generation Rapid-Response Pressure Control, elevated performance, and the longest life pump in its class, the Ultra 495 XT is a workhorse.

#### FEATURES

- **Xtreme Torque Motor Technology**
  - 15X more torque than traditional motors
  - Up to 10X quieter
- **Rapid-Response Pressure Control**
  - Instantly responds to deliver the best finish quality
  - Industry's largest operating pressure range (50-3,300 psi)
- **Selectable Performance Modes**
  - Two selectable spray modes offer unique performance levels to boost efficiency on every job
  - Low Pressure Mode (50 - 2,000 psi)
  - High Pressure Mode (500 - 3,300 psi)
- **Easy-to-Read LED Digital Display:** Visible in even the toughest spraying conditions
- **TurboClean Cleaning System:** Delivers 3X faster cleaning with 1/2 the water
- **WatchDog Pump Protection:** Prevents damage by shutting off pump when it's time to refill
- **Durable Filtration:** Easy Out Filter provides easy maintenance and less clogging
- **Easy Transport:** Only 31 lbs (Stand)



### spinMASTER™ II

#### CENTRIFUGAL-CAST MANHOLE LINER SYSTEM — FOR EPOXIES

We are revolutionizing manhole lining application technology with the spinMASTER II epoxy applicator. Put an end to uneven coating applications and long, backbreaking hours spent finishing up the job with this innovative, easy-to-use device. Designed with direct input from field-experienced applicators, we have developed a centrifugal-cast product that offers unprecedented precision and accuracy. Our patent-pending design features a variable trajectory casting head to speed up the entire process, for a precise and efficient application.



### SPN-1000 Mortar Spincaster

#### FEATURES

- Apply cementitious linings without entering the structure
- Uniform coating makes brushing or troweling quicker and easier
- Lightweight and balanced
- Use material hose to raise and lower
- Easy to clean and maintain
- Air driven motor (requires a minimum of 65 CFM at 100 PSI)





[WWW.VORTEXCOMPANIES.COM](http://WWW.VORTEXCOMPANIES.COM)

[SALES@VORTEXCOMPANIES.COM](mailto:SALES@VORTEXCOMPANIES.COM)

1-855-WHYDIG1

18150 IMPERIAL VALLEY DR.

HOUSTON, TX 77060