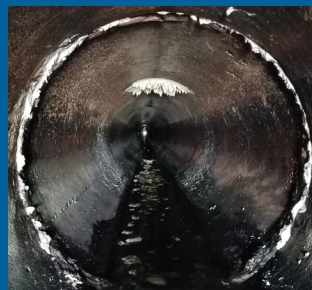


MAVERICK HIGH- PERFORMANCE GROUTS



**MAVERICK
GROUTS**

The family of Maverick single- and dual-component polyurethane foam grouts address a broad range of infrastructure problems.



APPLICATIONS

- Anywhere there is inflow and infiltration
- Major cracks and voids
- Soil stabilization
- Curtain grouting
- Lifting & leveling

Stop | & | Fill Voids | Stabilizes Soil | Lift & Re-level



Maverick I & I

RAPID-SETTING GROUTS FOR HEAVY INFILTRATION & LEAK STOPPAGE

Maverick I&I hydrophilic and hydrophobic polyurethane foams are designed to stop active infiltration and exfiltration at the source. These single and dual-component systems deliver controlled expansion, fast reaction, and strong adhesion in wet environments.

Ideal For:

Sealing joints, cracks, penetrations, and soil-to-structure interfaces in critical infrastructure



Maverick Stabilization

STRUCTURAL FOAMS & GROUTS TO BOOST STRENGTH & LOAD-BEARING CAPACITY

Maverick stabilization grouts improve soil strength and load-bearing capacity through controlled expansion and soil bonding. Available in single and dual-component formulations to perform in dry or saturated conditions.

Ideal For:

Stabilizing subgrades, foundations, embankments, and mining ground without excavation



Maverick Void Fill

EXPANDING MIGRATION & STRUCTURAL FOAMS FOR BROAD RANGE OF INFRASTRUCTURE

Maverick void fill grouts are engineered to efficiently fill unknown or inaccessible voids caused by erosion or loss of support. High-expansion polyurethane formulations displace water and consolidate surrounding soils.

Ideal For:

Sinkholes, annular spaces, utility voids, and subsurface mining applications



Maverick Lift

STRUCTURAL LIFTING FOAMS FOR ROADWAYS, BRIDGES, SOILS

Maverick lift grouts provide precise, controlled expansion to raise and re-level settled slabs and structures. Dual-component polyurethane systems allow accurate lift control while stabilizing underlying soils.

Ideal For:

Roadways, industrial floors, foundations, and heavy infrastructure with minimal disruption



Maverick Acrylamides & Acrylates

FOR SOIL STABILIZATION & SEALING

A family dry powder grouts that readily dissolve in water to produce a low viscosity grout solution.

Ideal For:

Infiltration control, sealing of pipeline joints, laterals, manholes, and vaults and soil stabilization