



CITYLIGHT® UV CURING SYSTEM

POWERFUL TECHNOLOGY FOR UV CURING OF GRP LINERS





The CityLight[®] UV CIPP Curing System

**FOR UV CIPP LINING, CITYLIGHT
UV TECHNOLOGY IS UNSURPASSED
IN ITS WORKING RANGE OF 6"-80"
(DN150-DN2000) DIAMETER PIPE.**

It's Compact

Job site access to the sewer or pipe is often challenging and leaves little room to install equipment. With the compact CityLight system, you can place the entire system in narrowest of lanes with little interruption of traffic flow while still being able to reach the manhole or access the pit.

It's Powerful

CityLight offers one of the most powerful UV curing systems in the field of sewer and pipe rehabilitation. The system's technology offers maximum UV light output of 12 x 2000W and is equipped with the industry's most innovative digital control features.

It's Ergonomic

CityLight is as easy as using a smartphone. Everything is controlled via the Hurricane[®]-COCKPIT, with a touchscreen on the cable drum or the vehicle's Hurricane[®] computer workstation.

It's Safe

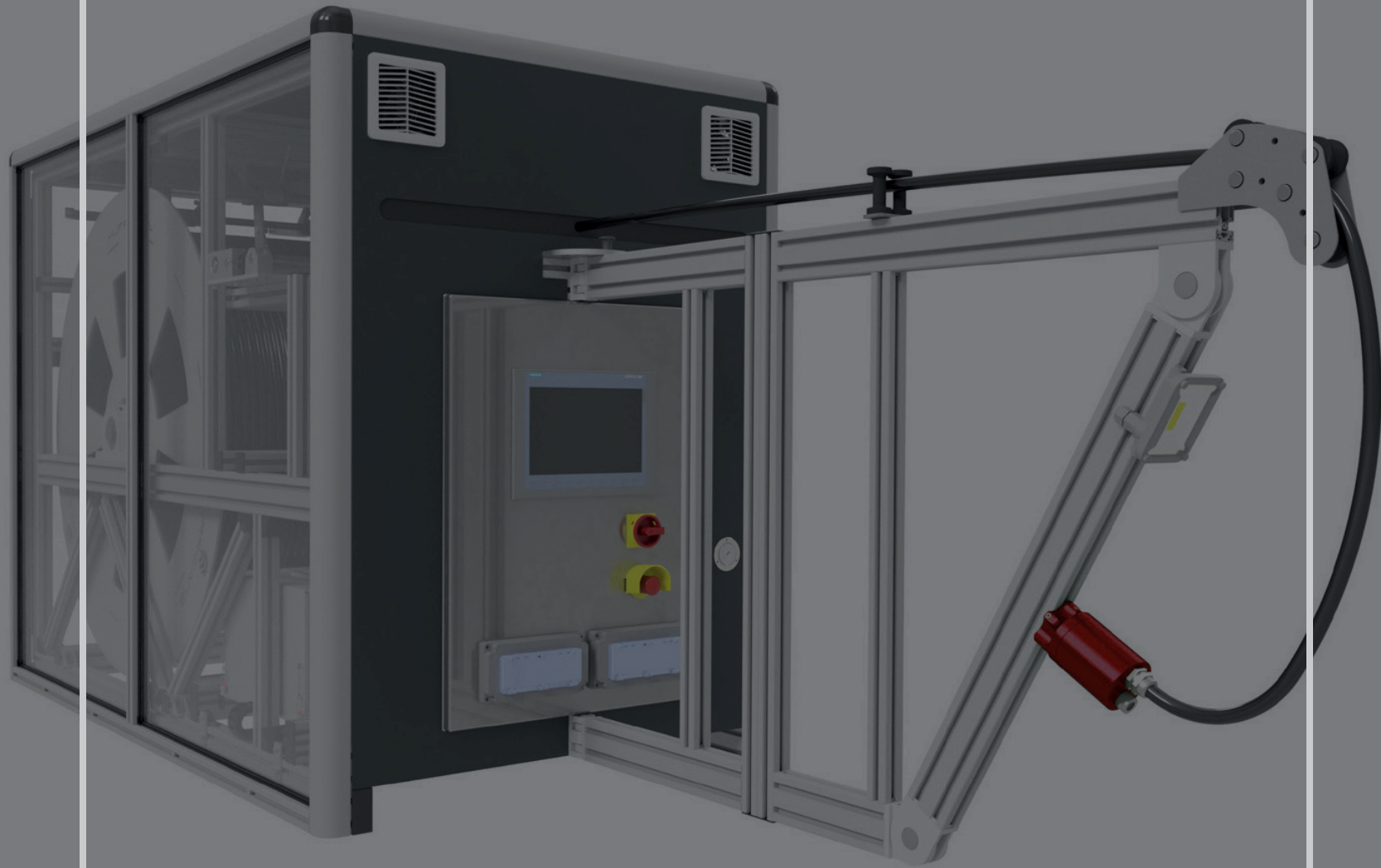
Jobsite safety is important. In dangerous traffic situations, high aerosol loads or bad weather, you can simply work from inside the vehicle.

It's Efficient

Our CityLight system is also efficient, with easy handling and powerful performance – along with less stress for the operator.



VORTEX



State-of-the-Art
Equipment

**HIGH
PERFORMANCE**

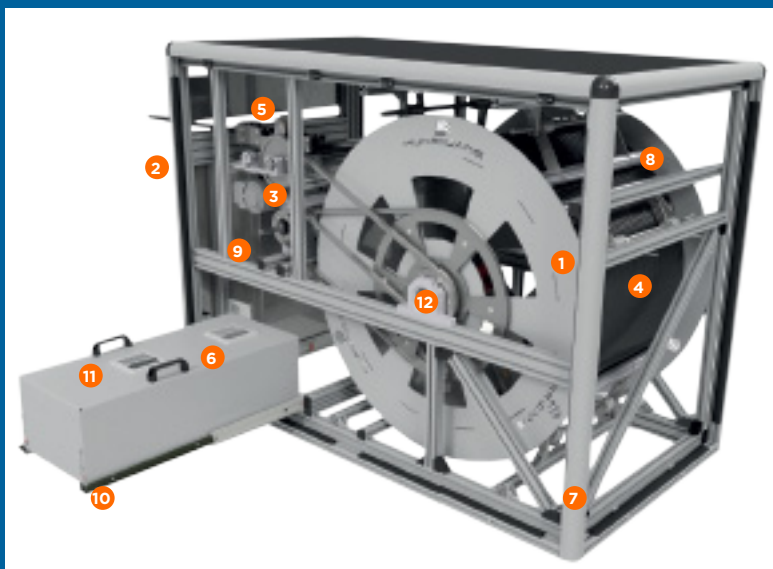
**ELECTRICALLY
DRIVEN**

State-of-the-Art Equipment

SPS CONTROL AND SUFFICIENT POWER FOR UV CURING UP TO 80" (DN2000)

The Hurricane® CityLight UV curing system cable drum with PLC control features a high strength aluminum frame, weighing only 1,675 lbs. (675 kg). All equipment can be operated via the PLC with a brightly illuminated Siemens SIMATIC touch screen located at the front of the unit.

The cable drum is electrically driven, has a cross guide spindle and can be built with either 650 or 985 ft. (200 or 300 m) of heat-resistant UV curing cable. The curing cable has been designed for durability and has a self-crosslinking PUR outer coating. The cable drum also has an automatic freewheeling system and features interior lighting.

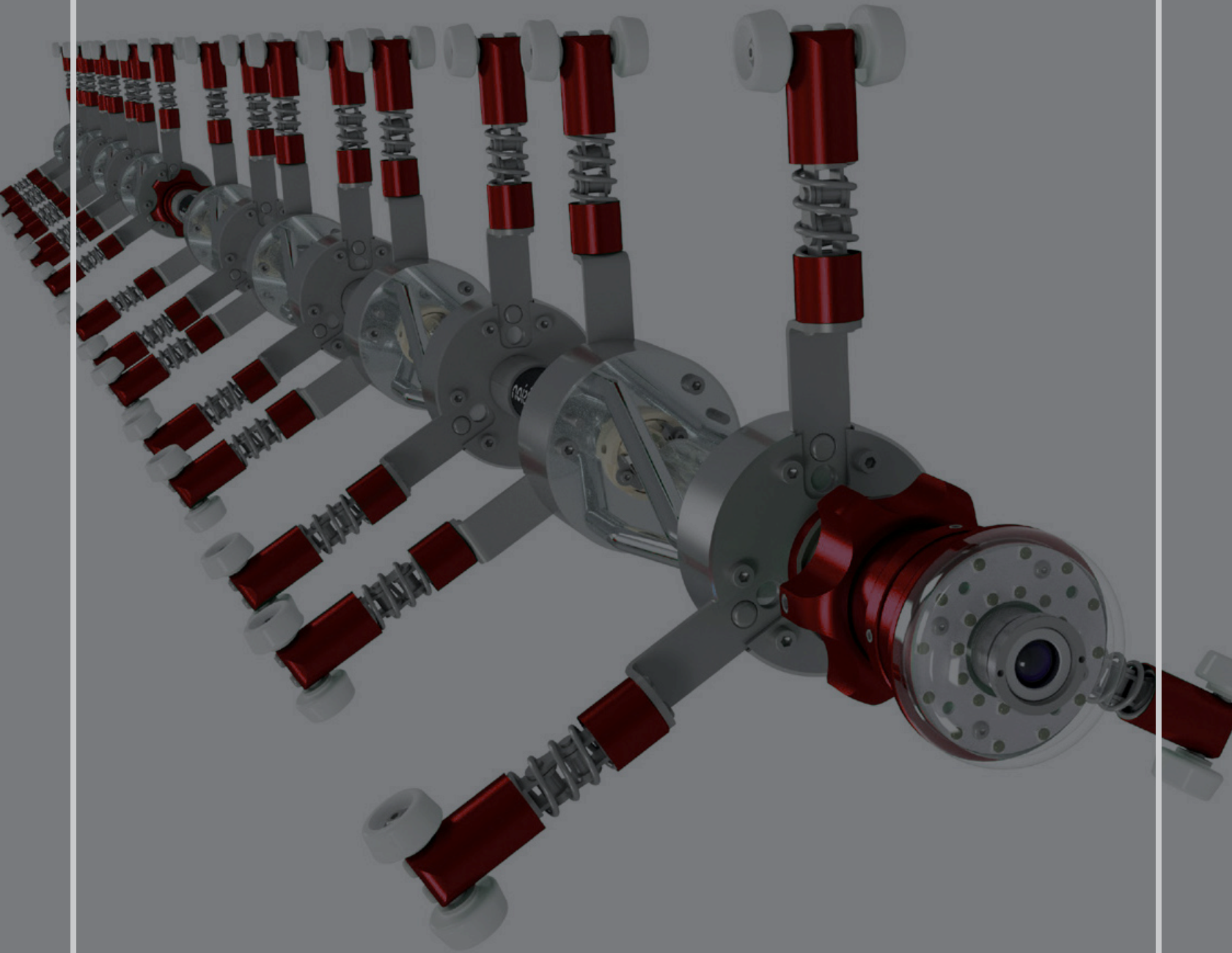


TECHNICAL DETAILS

- Dimensions (LxWxH):
6.5 x 3.5 x 4.75 ft.
(2000 x 1065 x 1455 mm)
- Control: Siemens Simatic PLC
- Chassis: Aluminum Lightweight
- Special Feature: Integrated Blower Control
- Weight: 1,686 lbs. (765 kg)
(w/o Power Pack)
- Flexible: Vehicle Integratable

1. Stainless Steel Cable Drum (max. 300 m)
2. Siemens Simatic PLC Control
3. Drive Unit
4. UV Heat Resistant Curing Cable
5. Integrated Length Measurement
6. Modular Power Pack Module
7. Special Profile Frame (Aluminum)
8. Adjustable Pressure Rollers
9. Control Cabinet and Control Unit
10. Heavy Duty Pull-Out System
11. Filter Fan for Air Circulation
12. Electric Slip Ring

VORTEX



CityLight® UV
Light Chain

FAST & SAFE

SMARTLY ADAPTED

CityLight® UV Light Chain

Order Number 29400000



LIGHT CHAIN 6"-24" (DN150-DN600)

The Hurricane® Light Chain has eight centrally arranged and power-controlled UV lamps from 400-650W, depending on the pipe diameter. By exchanging the spring-mounted wheel sets, the Light Chain is optimally and smartly adapted to different pipe diameters.

With the help of a front- and back-eye camera, the quality of the UV liner can be monitored while the chain is being pulled through. Defects such as wrinkling, air pockets or damaged inner foil caused by improper installation are detected. The sensors installed in the chains provide information about temperature development in the liner.

TECHNICAL DETAILS

- Pipe Dimensions:
Circular Profiles
6"-24" (DN150-DN600)
Egg Profiles
8"-12" (DN200-DN300)
20"-30" (DN500-DN750)
- Number of Lamps:
8 Pcs.
400-650W
with Pluggable Ceramic Sockets
- Total Power:
3200W - Use of 1 Light Chain
5200W - Use of 2 Light Chains
- IR Sensors: 3 Pcs.
Laminate Temperature Detection
- Ambient Air Sensor: 1 Pc.
Ambient Temperature Detection



Connection adapter with quick release



Precise IR temperature sensors



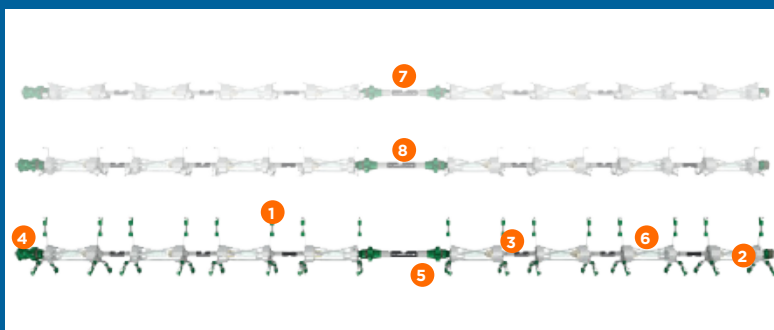
High power UV lamps



Flexible, spring-loaded wheel sets

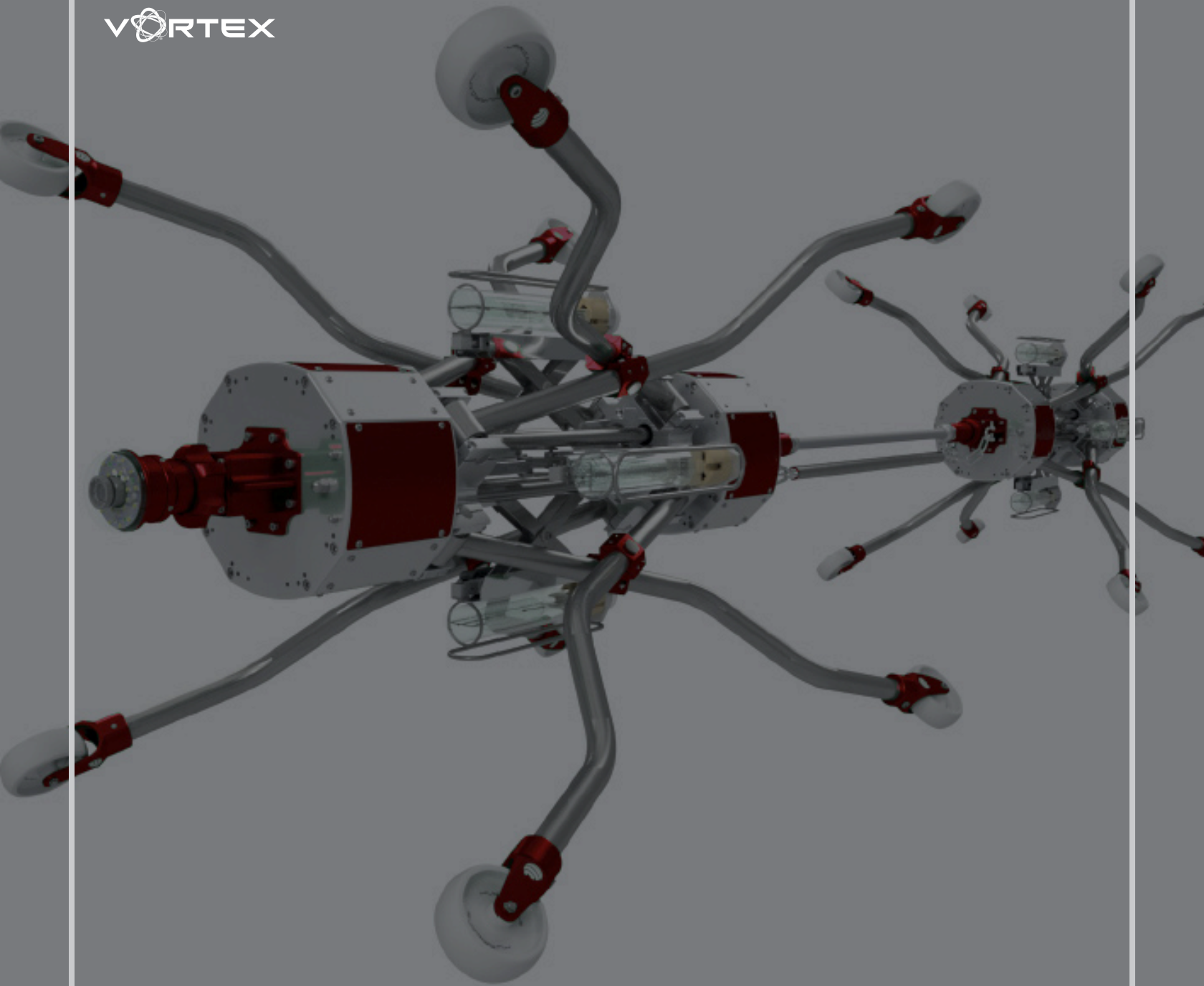


CCD camera with LED illumination



1. Plug & Play Wheels
2. Infrared Sensors
3. Flexible Setup
4. Plug & Play Front Camera
5. Connector
6. Reflective Lamp Case
7. Setup 6" (DN150)
8. Setup 10" (DN250)

VORTEX



CityLight® UV Dual Core

QUICK

EASY

CityLight® UV Dual Core

Order Number 29500002



DUAL CORE 24"-64" (DN600-DN1600)

The Hurricane® Dual Core is used to efficiently cure resin-impregnated glass fiber liners from 24"-64" (DN600-DN1600). The dual core consists of two identically constructed, standalone core elements. Each core has four radially arranged UV lamps, each with 1000-1500W.

The nominal width of the core is adjusted by an electric drive and can be observed via an adaptive camera inside the packer. In its folded state, the core can be quickly and easily inserted into the shaft or pit through the UV packer.

TECHNICAL DETAILS

- Pipe Dimensions:
Circular Profiles
24"-64" (DN600-DN1600)
Egg Profiles
20"-30" (DN500-DN750)
24"-36" (DN600-DN900)
32"-48" (DN 800-DN1200)
- Number of Lamps:
8 Pcs.
1000-1500W
with Pluggable Ceramic Sockets
- Total Power:
6000W - Use of 1 Core
12000W - Use of 2 Cores
- IR Sensors: 3 Pcs.
Laminate Temperature Detection
- Ambient Air Sensor: 1 Pc.
Ambient Temperature Detection



Strain relief at the connection adapter



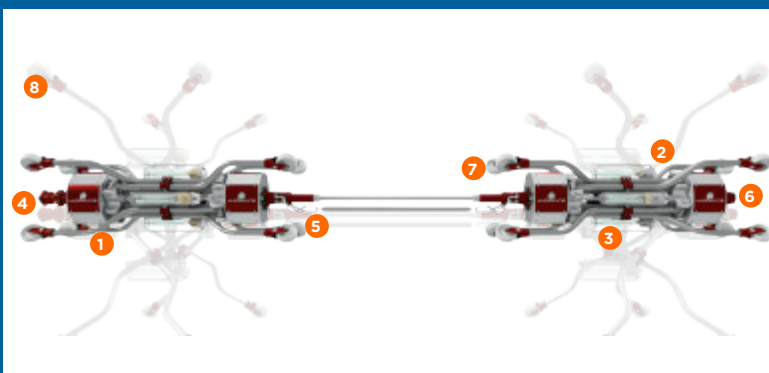
Expandable UV lamps



Compact design

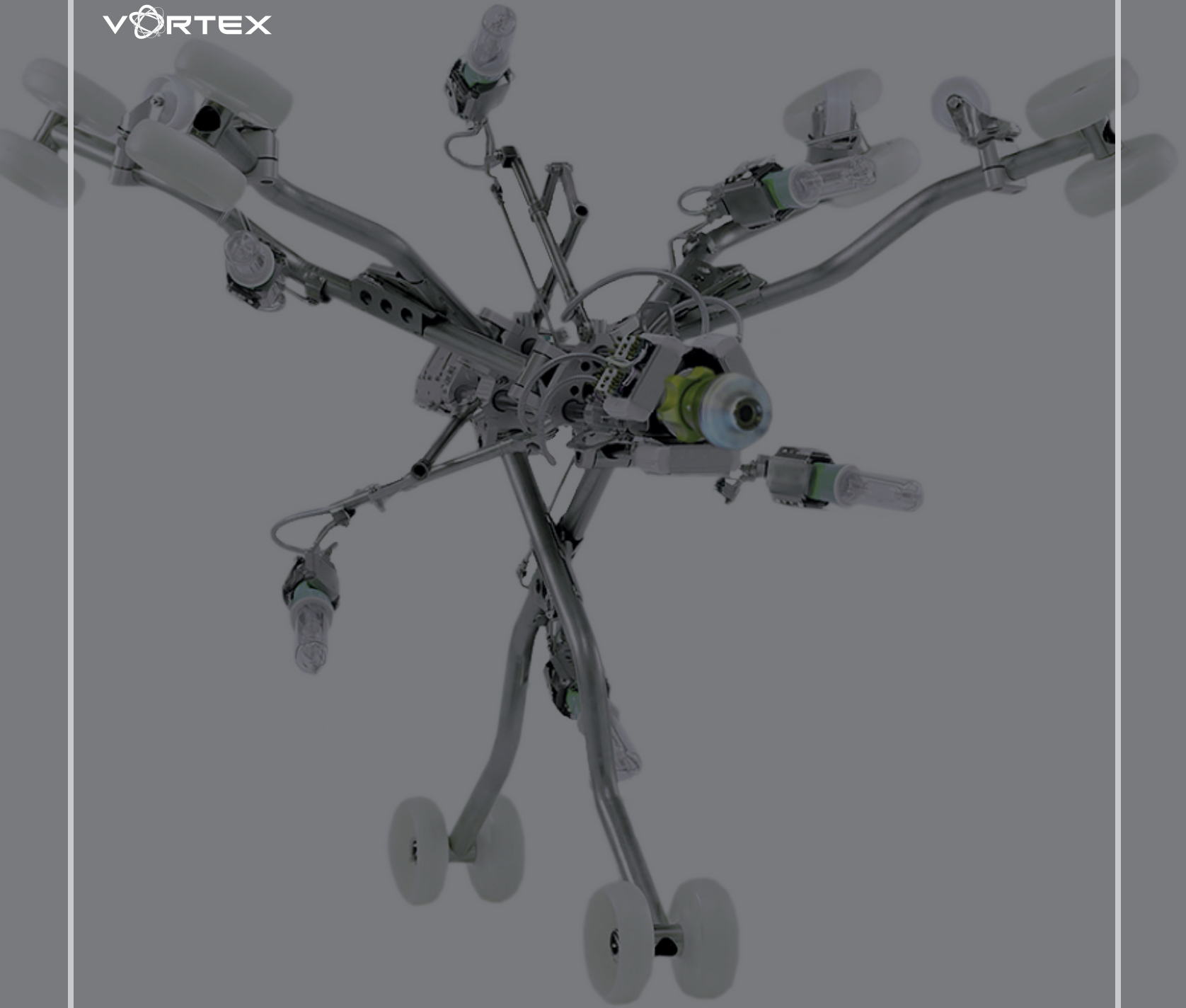


1 wheel set for all nominal widths



1. Electrically Extendable Legs
2. Infrared Sensors
3. Electrically Extendable Lamps
4. Plug & Play Front Camera
5. Connector with Strain Relief
6. Connection to Cable Drum
7. Rounded Plastic Wheels
8. Working Range 24"-64" (DN600-DN1600)

VORTEX



CityLight® UV
Giant Core

**MAXIMUM
PERFORMANCE**

**FOR MAXIMUM
DIAMETERS**

CityLight® UV Giant Core

Order Number 29500003

GIANT CORE 48"-80" (DN1200-DN2000)

Like the Light Chain and Dual Core, the Giant Core is suitable for circular and egg profiles. It contains three integrated infrared sensors for measuring the temperature of the liner surface. In addition, it has temperature sensors for measuring the air temperature in the liner.

The light source, which consists of two units, also has a front- and back-eye camera for visual control of the UV liner during the curing process. This system also features electronic, extendable legs, with scissor lift action, for easy adjustment and fit to the pipe's diameter. This makes it possible to insert them into a standard DIN 19584 shaft [24" (61.5 cm)] without dismantling the legs or lamps.

TECHNICAL DETAILS

- Pipe Dimensions:
Circular Profiles
48"-80" (DN1200-DN2000)
Egg Profiles
36"-54" (DN900-DN1350)
- Number of Lamps:
12 Pcs.
1500-2000W
with Pluggable Ceramic Sockets
- Total Power:
18000W - Using 1500W Lamps
24000W - Using 2000W Lamps
- IR Sensors: 3 Pcs.
Laminate Temperature Detection
- Ambient Air Sensor: 1 Pc.
Ambient Temperature Detection



Scissor lift of the legs



High power UV lamps



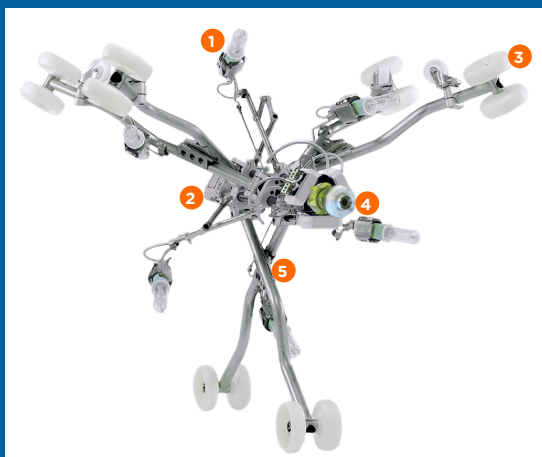
Additional vertical wheel



Electrical lamp adjustment

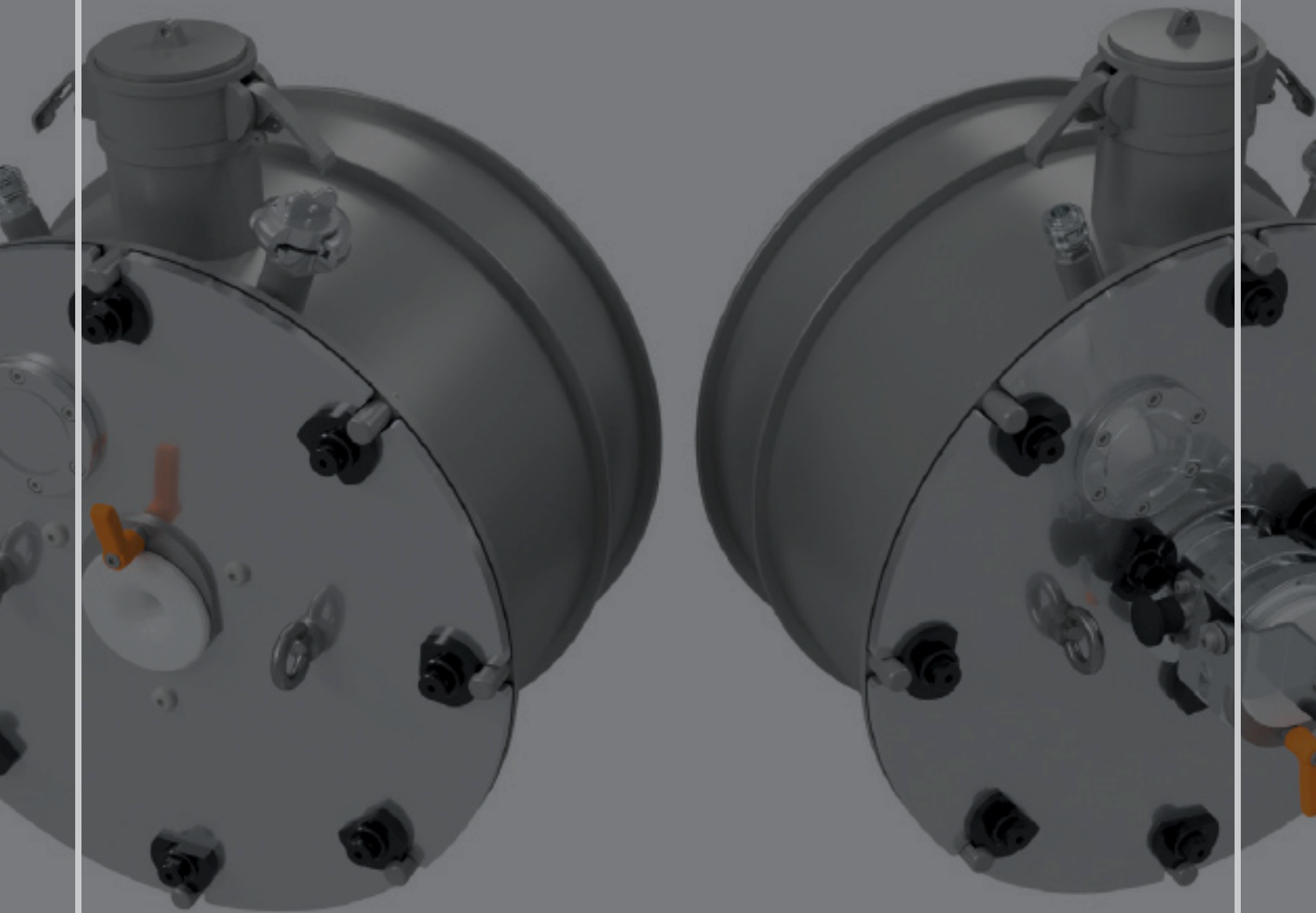


High resolution CCD camera



1. Adjustable Lamps
2. Infrared Sensors
3. Maximum Nominal Range
4. Plug & Play Front Camera
5. Compact Core Due to Scissor Lift

VORTEX



Accessories

BEST CHOICE

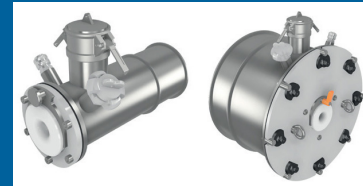
USER FRIENDLY

Accessories

UV PACKER SET 6"-24" (DN150-DN600)

Set 1

With the help of Hurricane® UV packers, the GRP liners are tied in and set up in a user-friendly manner. Set 1 consists of 5 pairs for nominal sizes 6"-24" (DN150-DN600). The stainless steel packers are equipped with matching air couplings for a compressor connection. The cover of the packers can also be removed without tools.



Order Number 29600000

UV PACKER SET 24"-48" (DN600-DN1200)

Set 2

Set 2 consists of 4 pairs for nominal sizes 24"-48" (DN600-DN1200). The stainless steel packers are equipped with matching air couplings for a compressor connection. The cover of the packers can be removed without tools, and the packers are splittable.



Order Number 29600001

UV PACKER SET 48"-80" (DN1200-DN2000)

Set 3

Set 3 consists of 4 pairs for nominal sizes 48"-80" (DN1200-DN2000). The stainless steel packers are equipped with matching air couplings for a compressor connection. The cover of the packers can be removed without tools, and the packers are splittable.



Order Number 29600040



Quick release fastener system



Heat resistant cable entry



Connection for compressor or blower



Connection packer camera



Cable deflection from 16" (DN400)



WWW.VORTEXCOMPANIES.COM
SALES@VORTEXCOMPANIES.COM

1-855-WHYDIG1
18150 IMPERIAL VALLEY DR
HOUSTON, TX 77060

The logo for IMS Robotics, consisting of the letters "IMS" in a large, bold, sans-serif font, with the word "ROBOTICS" in a smaller, all-caps, sans-serif font directly below it.

IMS
ROBOTICS